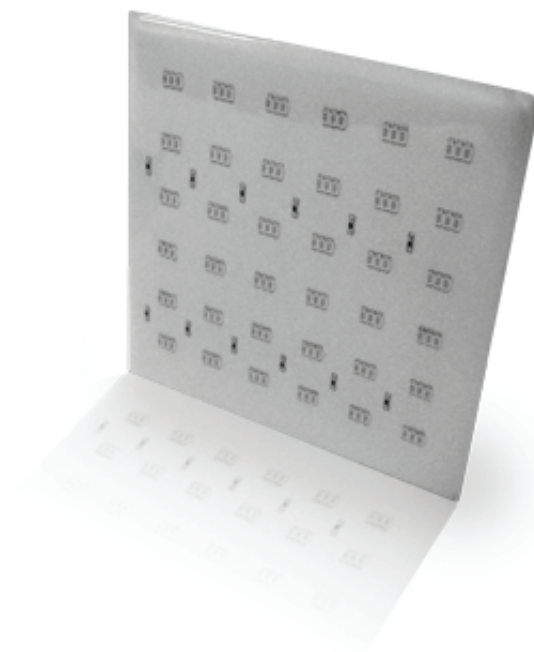




Sustainable LED Lighting Solutions...

DATA SHEET.

ELUME LED THINPAD



SPECIFICATIONS.

POWER CONSUMPTION (W) :

4.125" x 4.125" THINPAD = 5.8W

3" x 3" THINPAD = 3W

AVAILABLE COLOURS ...

CCT (K) - COOL : 6000° K

CCT (K) - NEUTRAL : 4200° K

OPERATING VOLTAGE (V) : 12 V

L70 RATED LIFESPAN (hrs) : 50,000 Hours

IP RATING : IP54 - Indoor Only

THERMAL MATERIAL : Translucent Epoxy

WARRANTY : 2 Years

- Covered under a 2 year warranty
- Dimmable (Optional)
- Available in 2 sizes
- Tileable
- Minimal heat output (Safe to the touch)
- Water resistant
- No mercury or harmful toxins
- Emits no UV or IR radiation
- No maintenance costs
- Long life (Up to 50,000 hours)
- Energy efficient - Low power consumption
- Low voltage - 12 Volts
- Uniform light output
- Easy to install (3M adhesive)
- Available in Warm White or Cool White
- Low profile & light weight
- Available in custom trims

CONTACT INFO.

www.elumanation.com
416.225.6400 - Toronto area
1.866.558.8270 - Toll Free

info@elumanation.com
1750 Plummer Street, Unit 15
Pickering, ON, Canada. L1W 3L7